

STAUFF Weld

Operates without high-voltage current (230V instead of 400V)

No heavy and expensive extension cords required

Extremely powerful and robust

Compact in design:
465 x 330 x 350 mm (L x B x H)

Lightweight: less than 20kg

Welding current: 100 ... 650A (stepless control)

Welding time: 5 ... 200ms (stepless control)



STAUFF Bond

STAUFFs alternative solution for attaching pipe clamps to industrial surfaces

No welding required

No power supply or electrical power required for installation

Eliminate need for hot work, fire watch and gas freezing

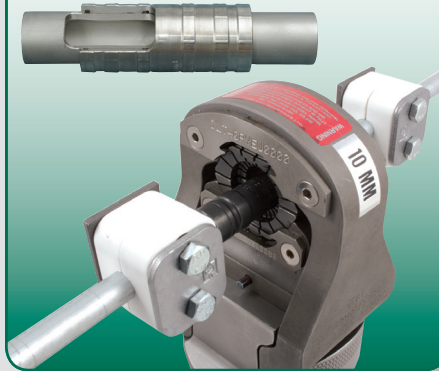
Reduce number of holes drilled into the structure



Pylok

Fast, reliable and tamper proof fittings with operating pressures over 9000 PSI (620 bar). A hydraulically powered hand-held compression tool swages the fitting over the pipe or tube plastically deforming the fitting.

This process forms a 360° radial compression around the pipe forming a permanent leak free seal.



STAUFF ACT CLAMP

Innovative Solutions for Hydraulic Applications

ACT CLAMP
anti**corrosion** technology

Renowned for a tradition of supplying quality hydraulic products and services, spanning many industries from blue chip clients, independent traders or OEMs; our philosophy is consistent:

STAUFF have the diversity, knowledge and infrastructure to ensure you, the customer, receives access to a wide range of products and the satisfaction of a quality service.



ULTRA HIGH PRESSURE RANGE

Our Spir Star® High Pressure range of valves, fittings, adaptors and tubing is available up to pressures of 60,000 psi (4138 bar), complementing our current range of Ultra High Pressure Spir Star® thermoplastic hydraulic hose assemblies, currently manufactured, tested and certified at our branches in Aberdeen and Sheffield.



ORDER A COPY OF OUR COMPLETE PRODUCT CATALOGUE

CONTACT YOUR LOCAL BRANCH



SHEFFIELD

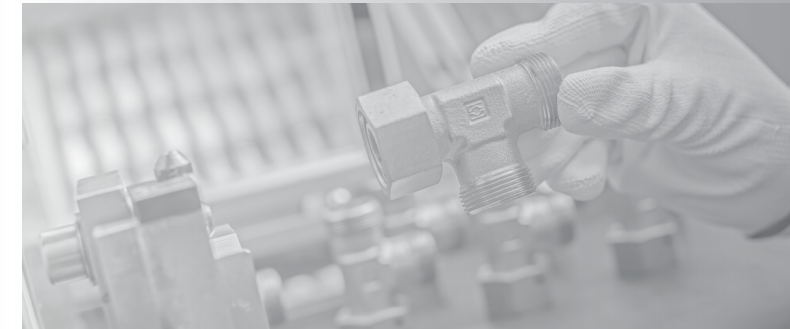
500 CARLISLE STREET EAST
OFF DOWNGATE DRIVE
SHEFFIELD
S4 8BS
T: 0114 251 8518
F: 0114 251 8519
sales@stauff.co.uk



Local Solutions for Individual Customers Worldwide



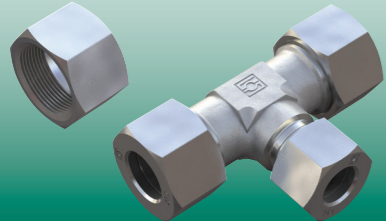
PRODUCT PORTFOLIO



STAUFF CONNECT

24° Tube Fittings are specified in ISO 8434-1 and DIN 2353 standards

Nuts and Cutting Rings
Male Stud Fittings
Tube Fittings
Bulkhead Fittings
Weld Fittings
Female Stud / Gauge Fittings
DKO Taper Fittings



STAINLESS STEEL COMPRESSION

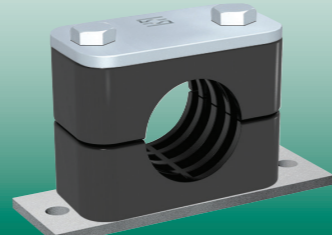


3.1 Documentation - 100% Traceability
Nut / Cutting Ring
Couplings
Elbows / Tee / Cross
Connectors
Anti-Sieze Paste



CLAMPS

Light, standard, heavy, twin series
6mm to 406mm diameter
Smooth and profiled designs
Produced to satisfy various DIN standards
Anti corrosion (ACT) available
Fire retardant (PPDA) available.
MoD approved
PP6853 - London Underground approved



STAINLESS STEEL ADAPTORS



BSP Bulkheads
BSP Adaptors
BSP Tees
BSP Cones



SUPERLOK



High precision design and manufacture
Applications: high pressure fluids, gaseous, vacuum and cryogenic
Supersmooth bore through connectors. Reducing friction and turbulence, helps improve flow
Nominal working pressures up to 15,300 psi
Compatible with other manufacturers twin ferrule connectors is assured.
Suitable for wide range of tube material

TUBE

Dual certified: 316L ASTM A269, ASTM A213, cold drawn bright annealed, metric OD

High alloy seamless ASTM B165 - 93, nickel copper alloy to UNS0400 (duplex), metric OD
Metric: DIN 2391/c ST 37.4NBK
4mm to 42mm

Imperial and nominal bore tubes 3602 CFS 360 up to 2" NB

Also available to contract requirements: cupro nickel 70/30, 90/10; copper BS287/C106, single wall Bundy tube

Other specialist metals available



TEST COMPONENTS

Carbon steel and stainless steel
Connection thread M16 x 2, M16 x 1.5, S12, 65 x 1.5 plug in system
Nominal working pressure up to 630 bar
Test hose: nominal bore DN2 and DN4
Pressure test kits assembled to customer specifications
Wide range of hose connectors



HOSE

We offer a comprehensive range from 1/8" micro-bore test hose to 2" 6 spiral
Hydraulic hose
High pressure hose
S Flex-ultra - spiral hose with greater flexibility
Pressure wash hose
Thermoplastic hydraulic hose



HOSE PROTECTION

Protection from abrasion, shock and general rubbing
Greater visibility, preventing accidents
Easy installation
Product range includes:
STAUFF-Spiral: wear indicator and antistatic, STAUFF-Sleeve MSHA, STAUFF-Wrap, STAUFF-Strip, Fire Sleeve, Spring Guard, Stainless Overbraid



HYDRAULIC ACCESSORIES

Level gauges - visual and electrical fluid level indication
Pressure gauges - mechanical
Throttle, shut-off and flow control valves in-line mounting, manifold mounting and cartridge assembly
Gauge indicator valves - single/multi station
Desiccant air breathers, return line bushings, suction strainers, diffusers, flow indicators, plastic and metal filler breathers



FILTRATION

High Pressure Filters: max working pressure up to 420 bar. Flow rate up to 1320 l/min
In-line Filters: max working pressure up to 14 bar. Flow rate up to 7000 l/min
Spin-on filters, offline filtration systems, bypass filtration systems, filter carts, comprehensive range of filtration systems and accessories available on request
Medium Pressure Filters: max working pressure up to 110 bar. Flow rate up to 90 l/min
Return-line Filters designed as tank-top filters. Maximum working pressure up to 16 bar



SAE FLANGES AND SOCKET WELD

Split and solid flanges
Threaded: BSP, metric, NPT, JIC, straight, 90° male and female
Blanking flanges
SAE flange adaptor blocks
Socket weld: straight and 90°
Butt weld: straight and 90°
Other specialist metals available
Socket weld nipples: straight and 90°



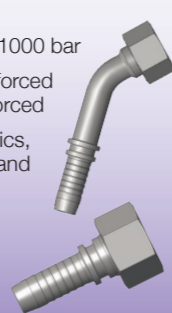
HOSE CONNECTORS

Manufactured to DIN, SAE and other International Standards
Hydraulic, suction, general purpose, air brake, stainless steel reinforced PTFE hose smooth bore and convoluted
End connectors to all major thread and flange standards and international specification
Working pressures up to 1000 bar
1, 2 and 3 wire braid reinforced / 4 and 6 spiral wire reinforced
Thermoplastic for hydraulics, paint spray, water jetting and jacking
Combination hose and tube assemblies
Hose test undertaken and certified



STAINLESS STEEL HOSE CONNECTORS

Manufactured to DIN, SAE and other International Standards
Hydraulic, suction, general purpose, air brake, stainless steel reinforced PTFE hose smooth bore and convoluted
End connectors to all major thread and flange standards and international specification
Working pressures up to 1000 bar
1, 2 and 3 wire braid reinforced / 4 and 6 spiral wire reinforced
Thermoplastic for hydraulics, paint spray, water jetting and jacking
Combination hose and tube assemblies
Hose test undertaken and certified



ADAPTORS

Adaptors available to all international thread standards
Adaptors available: male, female, flange, straight, 45°, 90°, swept, compact, tees, plugs, caps, bulkheads, locknuts
Available in carbon and stainless steel



VALVES

2 way ball valves
3 and 4 multi-way ball valves
Flanged - in accordance with DIN, SAE and ANSI standards
Manifold and cartridge ball valves
Accessories: locking devices, actuators and limit switches
Carbon steel and stainless steel



QUICK RELEASE COUPLINGS

ISO 'A' - Sizes 1/8" to 2" - working pressure 350 bar
Flat face - 1/4" to 1 1/4" - working pressure 250 bar
Very low volumetric expansion
ISO 'B' also available
QRC's in carbon and stainless steel



ULTRA HIGH PRESSURE RANGE



Maximum working pressure: up to 3200 bar
Working temperature up to 150°C
Very low volumetric expansion
Resistant to ozone, UV light and ageing
Lengths up to 4500 metres
High degree of chemical resistance
50% lighter than equivalent rubber hose
Significantly smaller bend radius at maximum flow

